

Market Mood



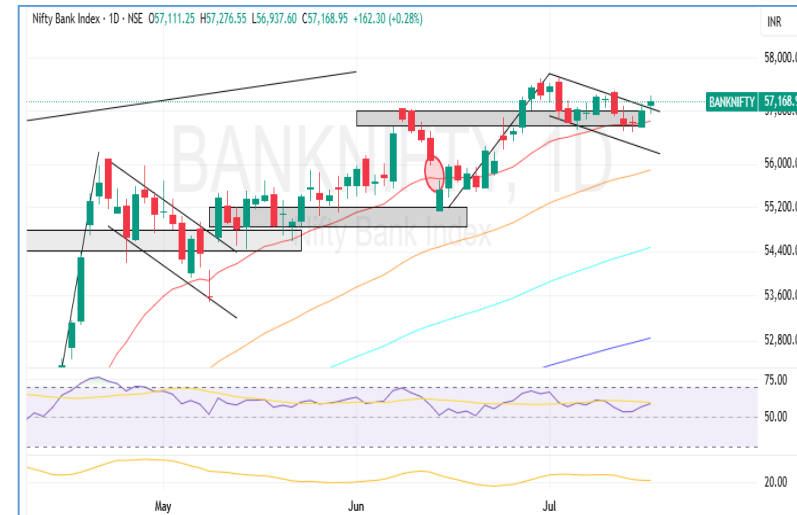
17th July 2025

Market Mood



LTP	25212.05
R1	25250
R2	25400
S1	25000
S2	24900

- Nifty traded in a narrow range and ended marginally positive at 25,212.05, up by 16.25 points. The index continues to hover within a zone, reflecting indecision and lack of strong momentum. Technically, the RSI is near 51, indicating a neutral stance without clear strength, while ADX has dropped to 16.89, showing a weak trend. Price action remains sandwiched between the 20 and 50-day EMAs, suggesting ongoing consolidation reinforcing the sideways sentiment.
- Unless Nifty decisively breaks above 25,250 or slips below 25,000, the broader trend is expected to remain range bound. A breakout or breakdown from this tight band could invite directional movement. Until then, traders should stay cautious, adopting a wait-and-watch approach or sticking to intraday opportunities within the defined zone.



LTP	57168.95
R1	57300
R2	57400
S1	56800
S2	56600

- Bank Nifty witnessed a positive trading session, ending at 57,168.95, up by 162.30 points. On the daily chart, the index appears to have broken out of a flag and pole pattern, indicating a potential bullish continuation. Today's breakout above the upper trend line, accompanied by a positive close, signals renewed buying interest.
- Technically, the RSI is at 58.76, showing improving momentum, while the ADX at 20.76 suggests that the trend strength is still moderate but gradually gaining. Price is comfortably placed above its 20-day EMA, reinforcing short-term bullish sentiment. For further upside,
- Bank Nifty needs a sustained move above the 57,300 mark; failure to do so might pull the index back into consolidation.

Global Market:

	Dow Jones Futures <small>CFD</small>	44,164.58	-90.20	-0.20
	17 Jul, 2025 07:49 IST			
	S&P 500 <small>CFD</small>	6,263.70	19.94	0.32
	17 Jul, 2025 01:29 IST			
	Nasdaq <small>CFD</small>	20,730.49	52.69	0.25
	17 Jul, 2025 01:29 IST			
	FTSE	8,926.55	-11.77	-0.13
	16 Jul, 2025 21:20 IST			
	CAC	7,722.09	-44.12	-0.57
	16 Jul, 2025 21:20 IST			
	DAX	24,009.38	-50.91	-0.21
	16 Jul, 2025 21:45 IST			

Sentiment Gauge



FII - DII Activities:

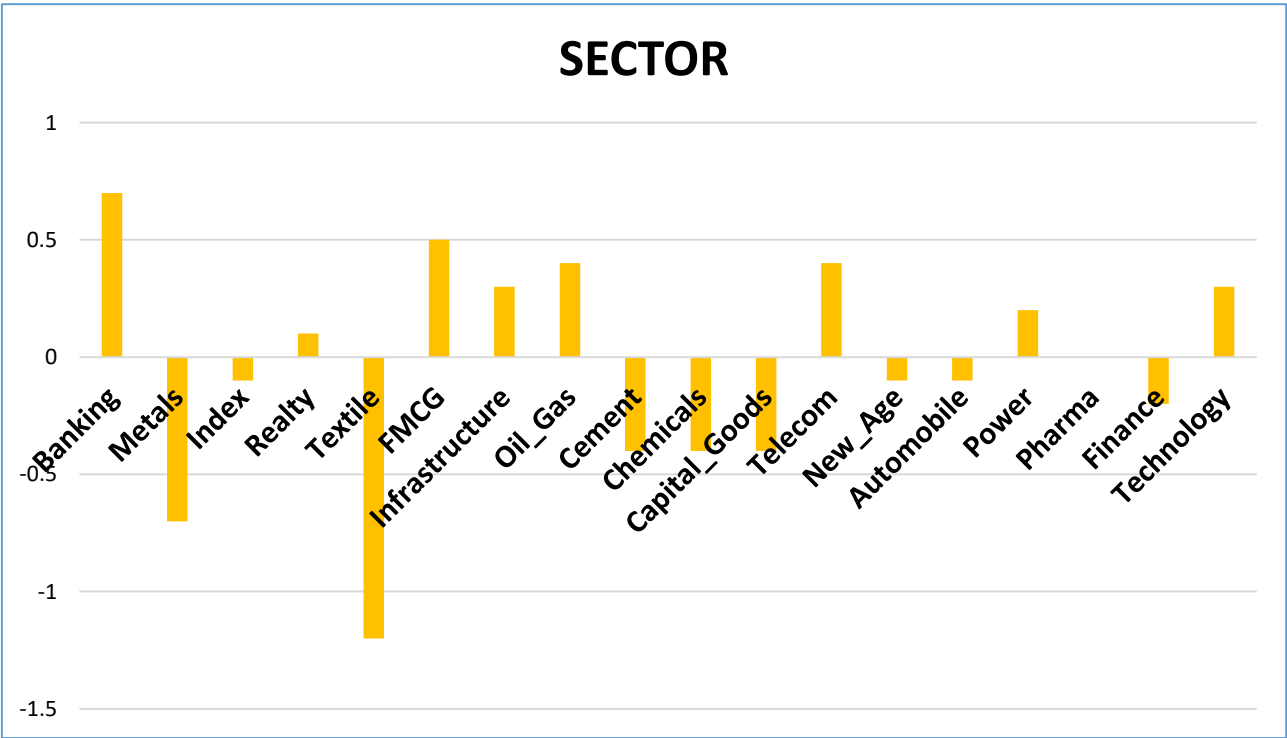
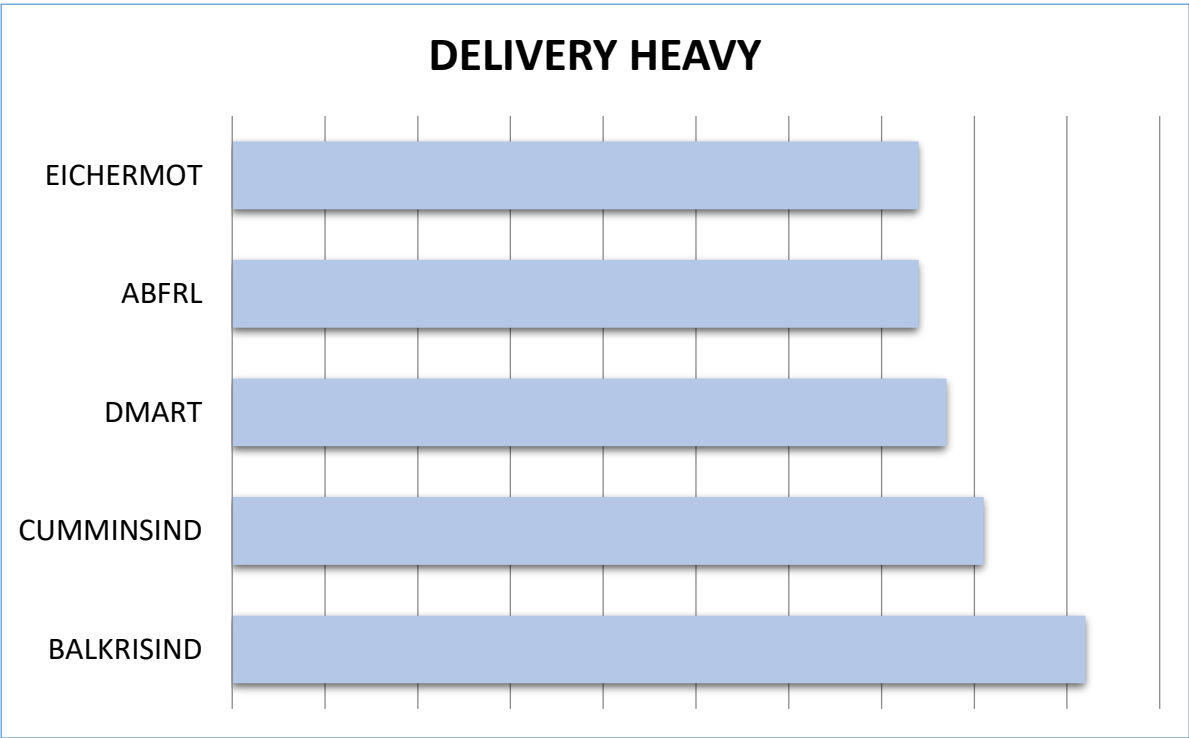
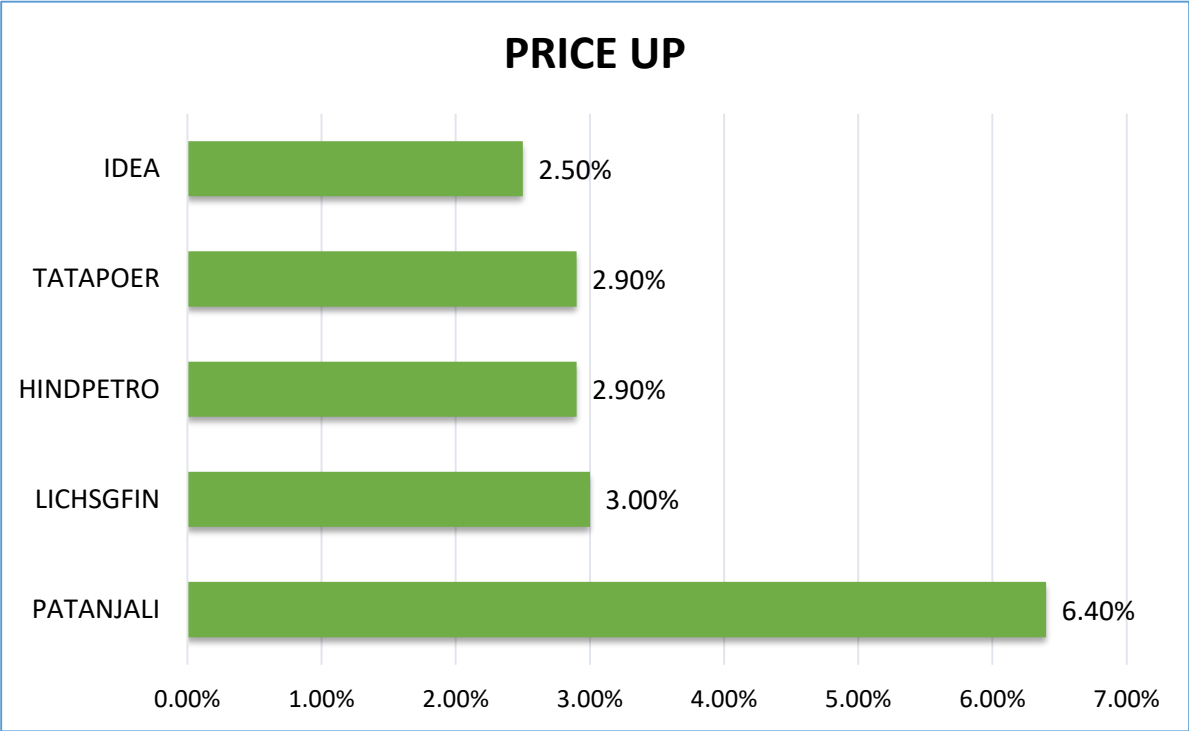
Activity	FII (Cr)	DII (Cr)
Cash	-1858.15	1223.55

Adv/Dec

Advance	Decline	A/D Ratio
104	125	0.83

17th July 2025

Market Mood



Results Calendar

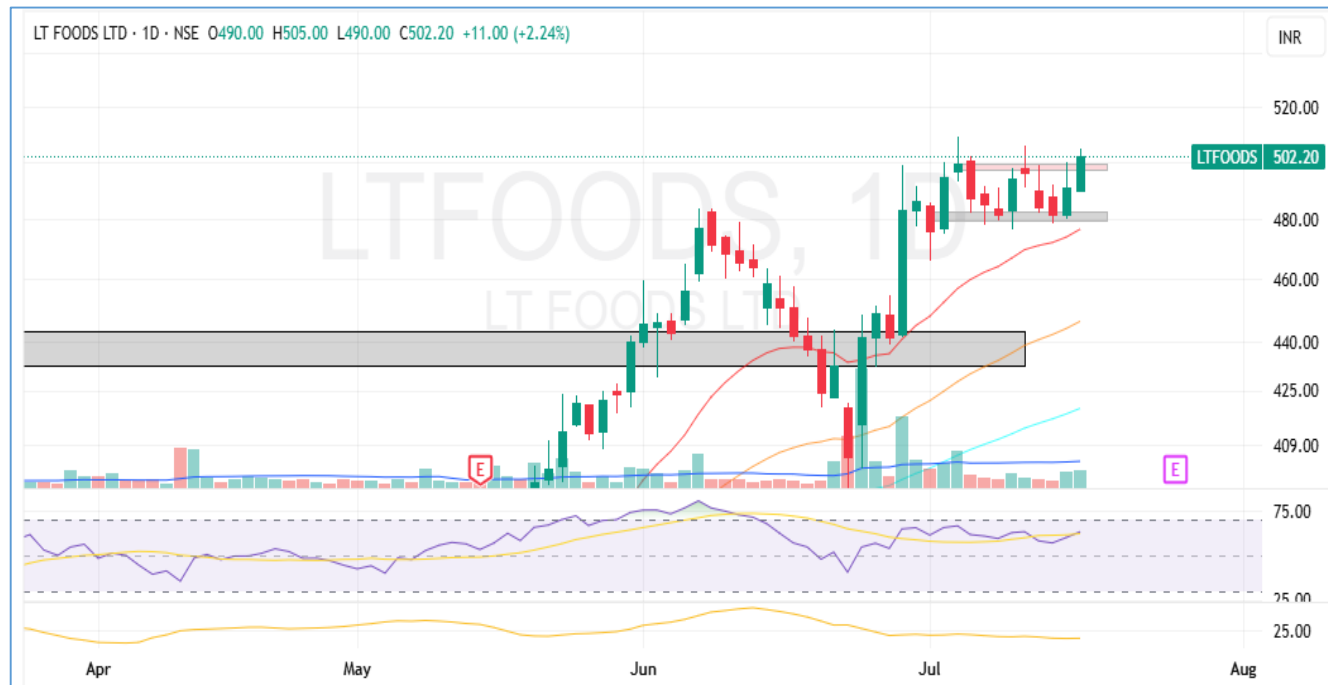
Date	RESULTS	Expected	Previous
17th July 25	WIPRO	-	-
17th July 25	JIOFIN	-	-
17th July 25	LTIM	-	-
17th July 25	INDIAN HOTELS	-	-
17th July 25	POLYCAB INDIA	-	-

17th July 2025

Market Mood



CALL OF THE DAY



LT FOODS (Intraday pick)

Buy Range : 502-503 SL :- 485 Target:- 540

LT Foods closed signaling a breakout from a double bottom pattern formation. The neckline resistance near 490–495 has been breached on the back of rising volumes, suggesting bullish intent. RSI stands at 63.18, supporting the momentum, while ADX at 21.17 indicates a trend in the early stages of strength. The stock is holding comfortably above all key EMAs, showing a healthy trend alignment. With the breakout structure in place and improving volumes, the stock looks positioned for an upward move.

DELIVERY CALL



PNB (Delivery pick)

Buy Range :- 114-115 SL:- 110.50 (daily closing basis) Target :- 125

PNB has confirmed a bullish breakout from an inverted head and shoulders pattern on the daily chart, indicating a potential trend reversal. This breakout is supported by strong volumes, with buying days witnessing higher activity than selling days—signaling robust participation. The stock is also well-aligned with the broader PSU Bank Index, which has recently witnessed a sectoral breakout, adding further strength to the uptrend. Both the 20 and 50 EMAs are sloping upward, reaffirming the prevailing bullish momentum.

17th July 2025

Market Mood



Nifty 50 Snapshot

Script	LTP	CHNG	%CHNG	R1	R2	S1	S2
M&M	3,203.00	74.4	2.38	3,283	3362.223	3,123.39	3,043.78
WIPRO	263	5.6	2.18	268	273.746	257.63	252.25
TECHM	1,608.50	29.5	1.87	1,633	1656.965	1,584.27	1,560.03
NESTLEIND	2,458.00	41.7	1.73	2,516	2573.814	2,400.09	2,342.19
SBIN	830.5	14.05	1.72	844	857.9617	816.77	803.04
INFY	1,609.00	23.4	1.48	1,633	1656.453	1,585.27	1,561.55
ADANIPTS	1,458.00	12.9	0.89	1,480	1501.616	1,436.19	1,414.38
EICHERMOT	5,627.00	36	0.64	5,685	5743.037	5,568.98	5,510.96
ITC	424.4	2.3	0.54	428	430.8487	421.18	417.95
ASIANPAINT	2,403.00	9.5	0.4	2,436	2469.822	2,369.59	2,336.18
ADANIENT	2,608.20	10	0.38	2,624	2640.528	2,592.04	2,575.87
LT	3,505.10	11.1	0.32	3,530	3554.6	3,480.35	3,455.60
MARUTI	12,569.00	33	0.26	12,654	12739.35	12,483.83	12,398.65
SBILIFE	1,828.80	4	0.22	1,841	1853.948	1,816.23	1,803.65
NTPC	342.5	0.5	0.15	344	346.2108	340.64	338.79
TITAN	3,418.00	3	0.09	3,441	3463.275	3,395.36	3,372.73
RELIANCE	1,486.20	0.8	0.05	1,500	1514.724	1,471.94	1,457.68
HDFCBANK	1,996.00	0.5	0.03	2,019	2042.052	1,972.97	1,949.95
TATACONSUM	1,082.00	0.2	0.02	1,096	1109	1,068.50	1,055.00
COALINDIA	386.5	0.05	0.01	388	390.2457	384.63	382.75
BAJAJFINSV	2,036.10	-0.4	-0.02	2,053	2070.258	2,019.02	2,001.94
AXISBANK	1,165.50	-0.4	-0.03	1,176	1186.236	1,155.13	1,144.76
BHARTIARTL	1,932.10	-2.1	-0.11	1,943	1954.738	1,920.78	1,909.46
DRREDDY	1,259.50	-1.4	-0.11	1,268	1276.471	1,251.01	1,242.53

17th July 2025

Market Mood



Script	LTP	CHNG	%CHNG	R1	R2	S1	S2
APOLLOHOSP	7,351.00	-9.5	-0.13	7,413	7475.349	7,288.83	7,226.65
TRENT	5,382.00	-8	-0.15	5,445	5507.2	5,319.40	5,256.80
HDFCLIFE	755.1	-1.75	-0.23	770	785.1835	740.06	725.02
ONGC	243	-0.67	-0.27	244	245.5325	241.73	240.47
HCLTECH	1,562.00	-4.4	-0.28	1,571	1579.178	1,553.41	1,544.82
INDUSINDBK	878.25	-2.75	-0.31	887	896.5927	869.08	859.91
TCS	3,230.90	-10.4	-0.32	3,253	3275.495	3,208.60	3,186.31
ULTRACEMCO	12,461.00	-41	-0.33	12,543	12625.4	12,378.80	12,296.60
ICICIBANK	1,425.90	-4.9	-0.34	1,434	1441.449	1,418.13	1,410.35
KOTAKBANK	2,178.90	-9.2	-0.42	2,203	2226.574	2,155.06	2,131.23
BAJAJ-AUTO	8,276.50	-34.5	-0.42	8,383	8488.768	8,170.37	8,064.23
POWERGRID	296.25	-1.8	-0.6	299	300.8544	293.95	291.65
JIOFIN	319.2	-2	-0.62	322	324.2205	316.69	314.18
HINDALCO	666.6	-4.25	-0.63	671	676.1431	661.83	657.06
HINDUNILVR	2,510.00	-16.9	-0.67	2,527	2543.033	2,493.48	2,476.97
BAJFINANCE	921.9	-6.5	-0.7	928	933.8449	915.93	909.96
JSWSTEEL	1,027.70	-7.3	-0.71	1,038	1048.997	1,017.05	1,006.40
GRASIM	2,758.00	-20.6	-0.74	2,777	2795.095	2,739.45	2,720.91
HEROMOTOCO	4,420.10	-33.9	-0.76	4,487	4554.518	4,352.89	4,285.68
TATAMOTORS	679	-5.4	-0.79	685	691.075	672.96	666.93
BEL	405.7	-3.25	-0.79	409	412.004	402.55	399.40
TATASTEEL	157.3	-1.7	-1.07	159	160.4582	155.72	154.14
CIPLA	1,470.70	-20.2	-1.35	1,485	1500.061	1,456.02	1,441.34
SUNPHARMA	1,704.00	-23.5	-1.36	1,728	1751.635	1,680.18	1,656.36
ETERNAL	262.1	-4.35	-1.63	266	270.2572	258.02	253.94
SHRIRAMFIN	668.2	-16.25	-2.37	687	705.7091	649.45	630.69

HARSHITA DARAK
Technical Research Analyst

Disclosure: M/s. Bonanza Portfolio Ltd here by declares that views expressed in this report accurately reflect view point with subject to companies/securities. M/s. Bonanza Portfolio Ltd has taken reasonable care to achieve and maintain independence and objectivity in making any recommendations. The Analysts engaged in preparation of this Report or his/her relative: - (a) do not have any financial interests in the subject company mentioned in this Report; (b) do not own 1% or more of the equity securities of the subject company mentioned in the report as of the last day of the month preceding the publication of the research report; (c) do not have any material conflict of interest at the time of publication of the Report. The Analysts engaged in preparation of this Report:- (a) have not received any compensation from the subject company in the past twelve months; (b) have not managed or co-managed public offering of securities for the subject company in the past twelve months; (c) have not received any compensation for investment banking or merchant banking or brokerage services from the subject company in the past twelve months; (d) have not received any compensation for products or services other than investment banking or merchant banking or brokerage services from the subject company in the past twelve months; (e) has not received any compensation or other benefits from the subject company or third party in connection with the Report; (f) has not served as an officer, director or employee of the subject company; (g) is not engaged in market making activity for the subject company.

M/s. Bonanza Portfolio Ltd is a registered Research Analyst under the regulation of SEBI, the year 2014. The Regn No. INH100001666 and research analyst engaged in preparing reports is qualified as per the regulation's provision.

Disclaimer: This research report has been published by M/s. Bonanza portfolio Ltd and is meant solely for use by the recipient and is not for circulation. This document is for information purposes only and information / opinions / views are not meant to serve as a professional investment guide for the readers. Reasonable care has been taken to ensure that information given at the time believed to be fair and correct and opinions based thereupon are reasonable, due to the nature of research it cannot be warranted or represented that it is accurate or complete and it should not be relied upon as such. If this report is inadvertently send or has reached to any individual, same may be ignored and brought to the attention of the sender. Preparation of this research report does not constitute a personal recommendation or take into account the particular investment objectives, financial situations, or needs of individual clients. Past performance is not a guide for future performance. This Report has been prepared on the basis of publicly available information, internally developed data and other sources believed by Bonanza portfolio Ltd to be reliable. This report should not be taken as the only base for any market transaction; however this data is representation of one of the support document among other market risk criterion. The market participant can have an idea of risk involved to use this information as the only source for any market related activity.

The distribution of this report in definite jurisdictions may be restricted by law, and persons in whose custody this report comes, should observe, any such restrictions. The revelation of interest statements integrated in this analysis are provided exclusively to improve & enhance the transparency and should not be treated as endorsement of the views expressed in the analysis. The price and value of the investments referred to in this report and the income from them may go down as well as up. Bonanza portfolio Ltd or its directors, employees, affiliates or representatives do not assume any responsibility for, or warrant the accuracy, completeness, adequacy and reliability of such information / opinions / views.

While due care has been taken to ensure that the disclosures and opinions given are fair and reasonable, none of the directors, employees, affiliates or representatives of M/s. Bonanza portfolio Ltd shall be liable. Research report may differ between M/s. Bonanza portfolio Ltd RAs and other companies on account of differences in, personal judgment and difference in time horizons for which recommendations are made. Research entity has not been engaged in market making activity for the subject company. Research analyst has not served as an officer, director or employee of the subject company. Research analyst has not received any compensation/benefits from the Subject Company or third party in connection with the research report.

Bonanza Portfolio Ltd. Bonanza House, Plot No. M-2, Cama Industrial Estate. Walbhat Road, Goregaon (E), Mumbai – 400063
Web site: <https://www.bonanzaonline.com> SEBI Regn. No.: INZ000212137 BSE CM: INB 011110237 | BSE F&O: INF 011110237 |
MSEI: INE 260637836 | CDSL: 120 33500 | NSDL: a) IN 301477 | b) IN 301688 (Delhi) PMS: INP 000000985 | AMFI: ARN -0186